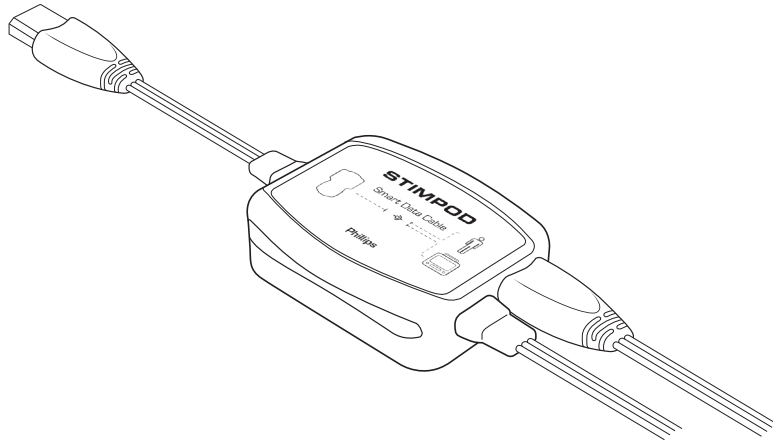


STIMPOD
NMS 450X

Quick Start Guide: Smart Data Cable Philips

XAVANT
TECHNOLOGY



- CS Průvodce rychlým spuštěním
- DA Guide til hurtig start
- DE Schnellstartgeber
- EL Οδηγός Γρήγορης Εκκίνησης
- ES Guía de inicio rápido

- FR Guide de démarrage rapide
- IT Guida rapida all'uso
- JA クイックスタートガイド
- KO 빠른 시작 가이드
- NL Snelstartgids

- PL Podręcznik szybkiej instalacji
- PT Guia de inicio rápido

XM400-21QSGC04-02



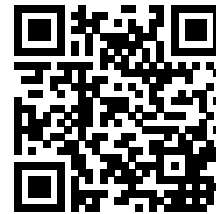
Xavant Technology (Pty) Ltd
Unit 102 Tannery Industrial Park
309 Derdepoort Road
Silverton, 0184, Pretoria
South Africa
Tel: +27 12 743 5959
Email: support@xavant.com



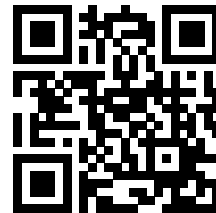
Emergo Europe
Prinsessegracht 20
2514 AP The Hague
The Netherlands



www.xavant.com/university

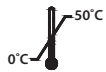


www.xavant.com/docs



CE
1639

Rx only



English	4
Czech (Čech)	6
Danish (Dansk)	8
Dutch (Nederlands)	10
French (Français)	12
German (Deutsche)	14
Greek (ελληνικά)	16
Italian (Italiano)	18
Japanese (日本語)	20
Korean (한국어)	22
Polish (Polskie)	24
Portuguese (O Português)	26
Spanish (El Español)	28



Quick Start

English

Connect to Philips IntelliVue Patient Monitor

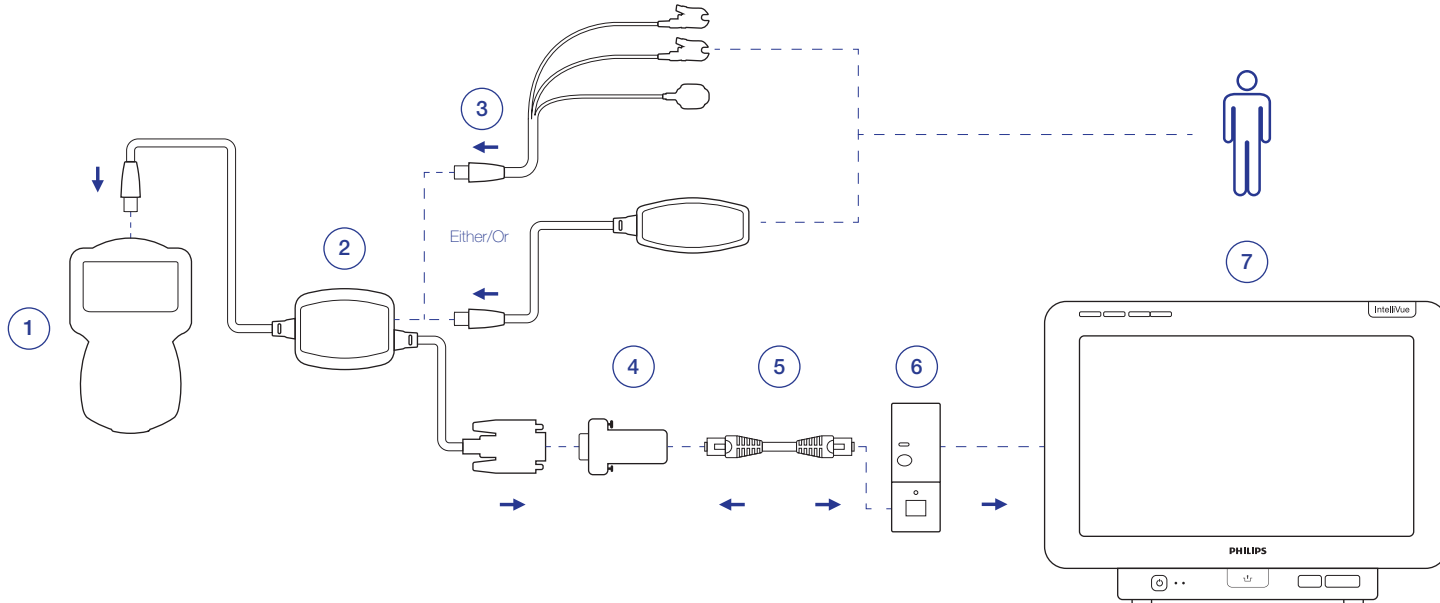


Required Components: Xavant Technology

1. Stimpod NMS 450X Software Ver 10.0 and higher
2. Smart Data Cable Philips
3. NMT Monitoring Cable AMG (or)
NMT Monitoring Cable EMG

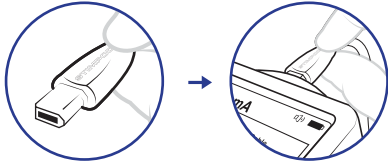
Philips

4. IntelliBridge EC5 ID Module PN 865114 opt 101
5. Connection Cable PN 865114 opt L01
6. IntelliBridge EC10 Module PN 865115 opt A01,101 (or)
EC10 Integral I/F Board (MX400-MX550 opt J32 only)
7. Philips IntelliVue Patient Monitor MP50 to MP90 or MX400 to MX850

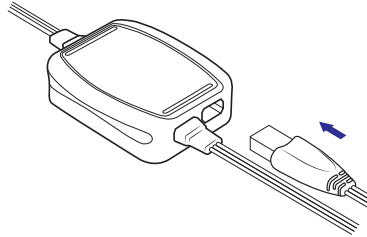


Setup: Stimpod to Phillips IntelliVue Patient Monitor I

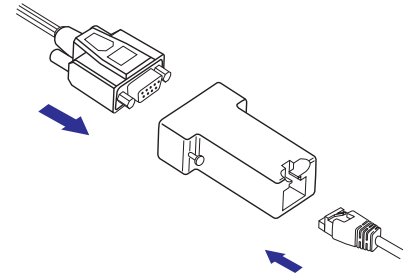
1 Connect Smart Data Cable Philips to Stimpod



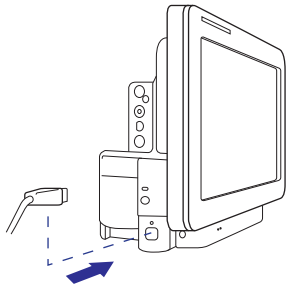
2 Connect NMT Monitoring Cable AMG/EMG to Smart Data Cable Philips



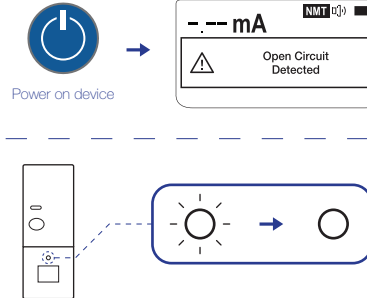
3 Connect Smart Data Cable Philips to Philips IntelliBridge EC5



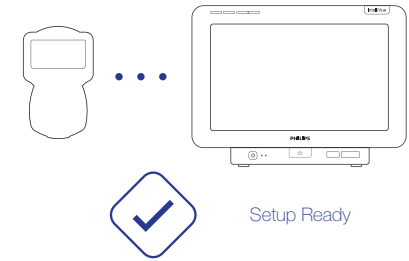
4 Connect EC5 to EC10 Module using the Connection Cable



5 Power Stimpod On and Wait for EC10 Module Green Flashing LED to turn solid



6 Continue with Standard Patient NMT Monitoring



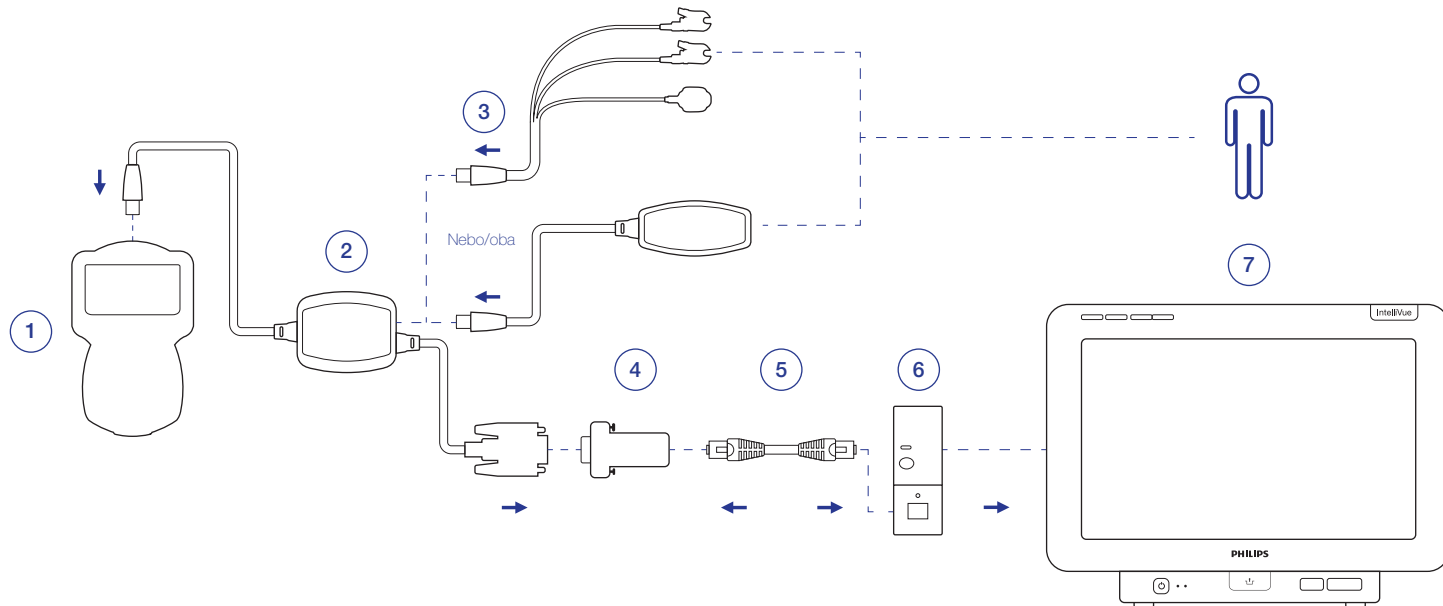


Nezbytné součásti: Xavant Technology

1. Stimpod NMS 450X Software verze 10.0 a vyšší
2. Datový kabel Philips
3. NMT Monitorovací Kabel AMG (Nebo)
4. NMT Monitorovací Kabel EMG

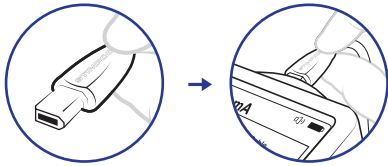
Philips

4. IntelliBridge EC5 ID Modul PN 865114 opt 101
5. Propojovací Kabel PN 865114 opt L01
6. Modul IntelliBridge EC10 PN 865115opt A01,101 (nebo)
EC10 Integral I/F Board (pouze MX400-MX550 opt J32)
7. Philips IntelliVue Patent Monitor MP50 až MP90 nebo MX400 až MX850

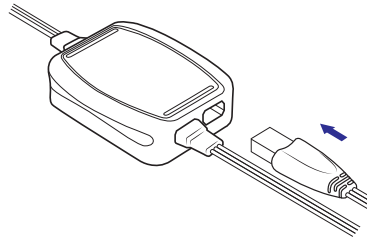


Připojení: Stimpod k monitoru Philips IntelliVue I

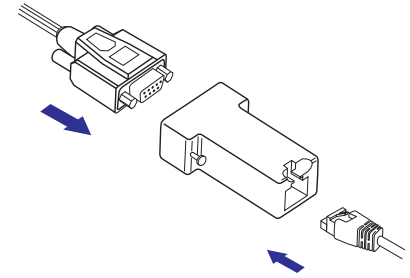
1 Připojte datový kabel: Philips ke Stimpodu



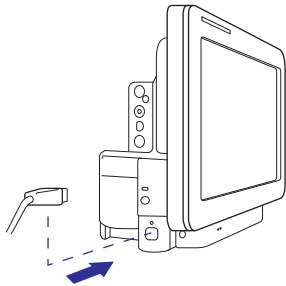
2 Spojte NMT monitorovací kabel AMG/EMG s datovým kabelem: Philips



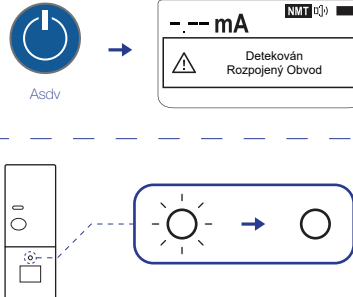
3 Propojte datový kabel: Philips s Philips IntelliBridge EC5



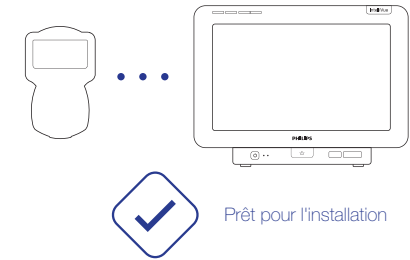
4 Propojovacím kabelem připojte Philips EC5 k modulu EC10



5 Zapněte Stimpod a počkejte až se zelená blikající LED na modulu EC10 změní na stálou



6 Pokračujte ve standardním NMT monitoringu pacienta





Hurtig Start

Danish (Dansk)

Tilslut til Philips IntelliVue Patientmonitor

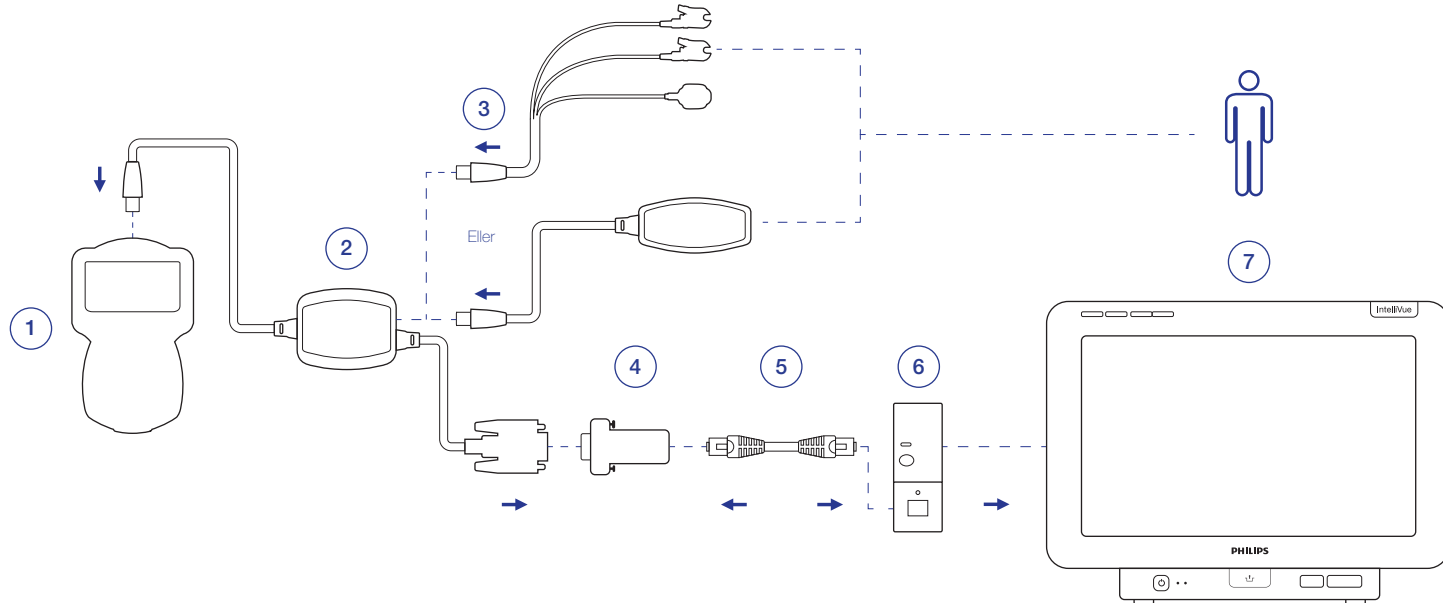


Nødvendige Komponenter: Xavant-teknologi

1. Stimpod NMS 450X-Software Version 10.0 og højere
2. Smartdata-Kabel Philips
3. NMT-Overvågningskabel AMG (eller)
NMT-Overvågningskabel EMG

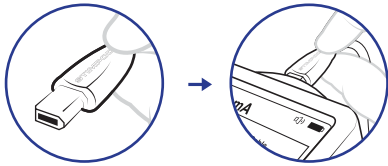
Philips

4. IntelliBridge EC5 ID Modul PN 865114 nr. 101
5. Forbindelseskabel PN 865114 nummer L01
6. IntelliBridge EC10-modul PN 865115 nummer A01,101 (eller)
EC10 Integral I/F Board (kun MX400-MX550 nummer J32).
7. Philips IntelliVue Patientmonitor MP50 til MP90 eller MX400 til MX850

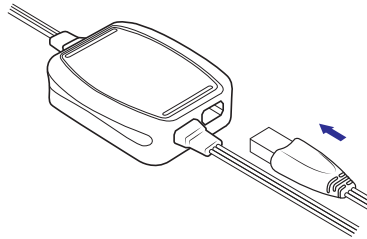


Setup: Stimpod til Phillips IntelliVue Patient Monitor I

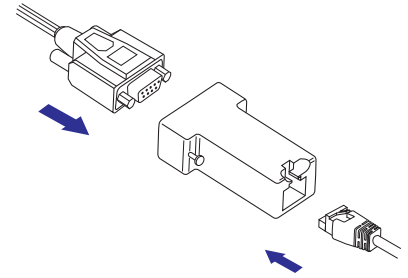
1 Tilslut til smartdata-kabel: Philips til Stimpod



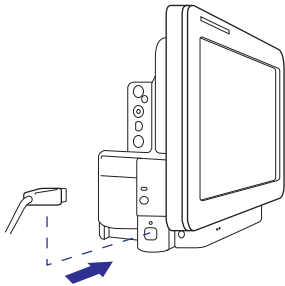
2 Tilslut NMT-overvågningskabel AMG/EMG til smartdata-kabel: Philips



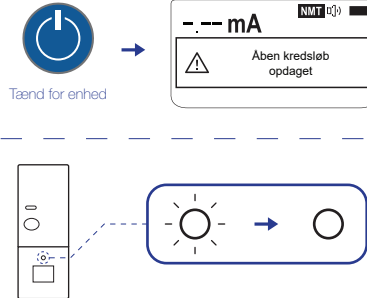
3 Tilslut smartdata-kabel: Philips til Philips IntelliBridge EC5



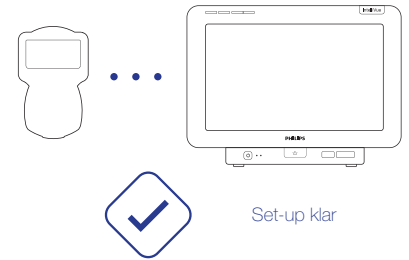
4 Tilslut Philips EC5 til EC10-moduliet ved hjælp af forbindelseskablet



5 Tænd for Stimpod og vent på at EC10-modulets grøntblinkende LED lyser fuldt op



6 Fortsæt med normal NMT-overvågning af patient





Snelstart

Dutch (Nederlands)

Verbind met de Philips IntelliVue Patiëntenmonitor

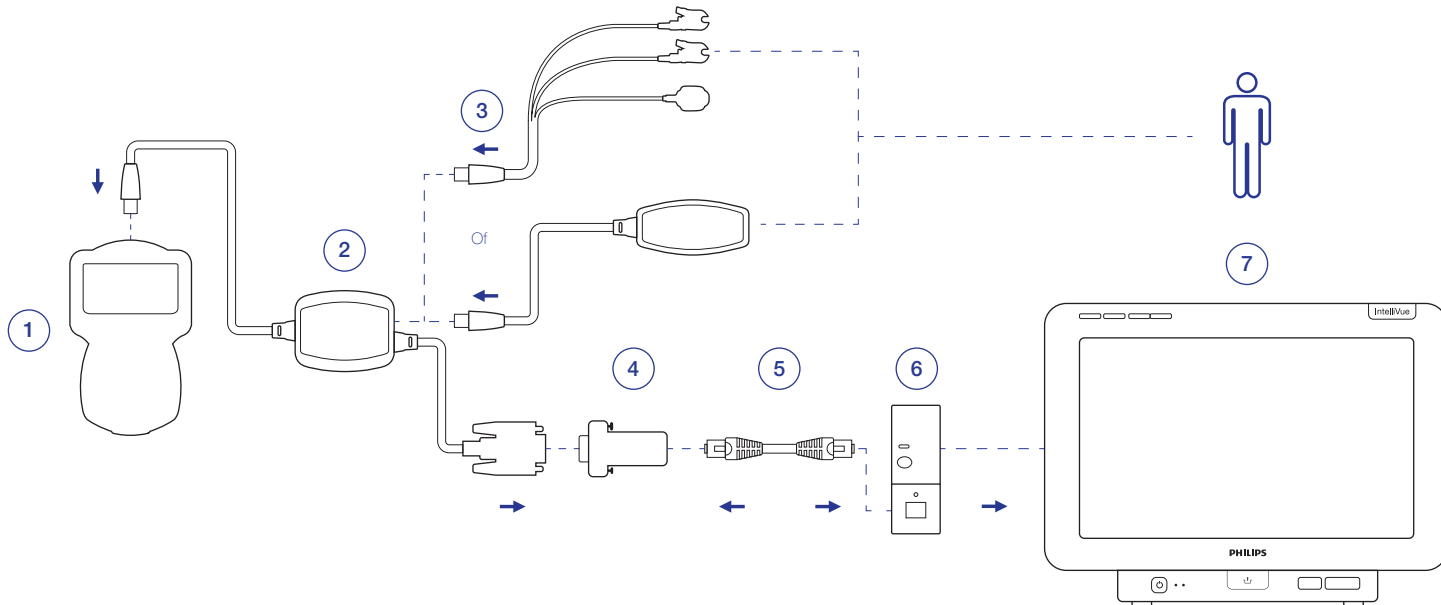


Vereiste Onderdelen: Xavant Technology

1. Stimpod NMS 450X-Software Versie 10.0 en hoger
2. Slimme Datakabel Philips
3. NMT-Monitoringkabel AMG (Of)
4. NMT-Monitoringkabel EMG

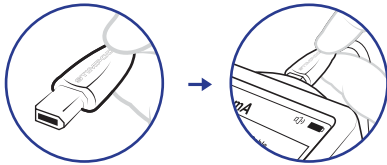
Philips

4. IntelliBridge EC5 ID Module PN 865114 opt 101
5. Verbindingskabel PN 865114 opt L01
6. IntelliBridge EC10 Module PN 865115opt A01,101 (of)
EC10 Integraal I/F bord (Ileen MX400-MX550 opt J32)
7. Philips IntelliVue Patiëntenmonitor MP50 tot MP90 of MX400 tot MX850

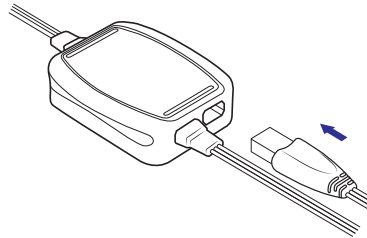


Installatie: Stimpod met Philips IntelliVue Patiëntenmonitor

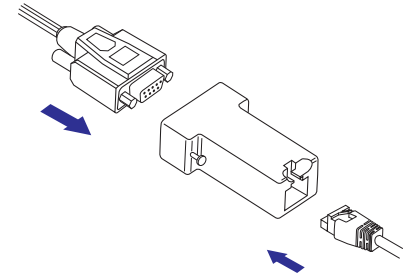
- 1** Verbind de slimme datakabel: Philips met Stimpod



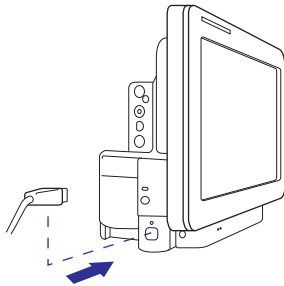
- 2** Verbind de NMT-monitoringkabel AMG/EMG met de slimme datakabel: Philips



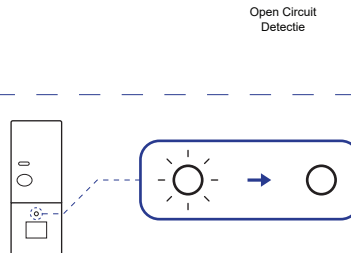
- 3** Verbind de slimme datakabel: Philips met de Philips IntelliBridge EC5



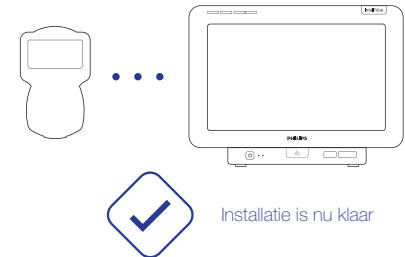
- 4** Verbind Philips EC5 met EC10 module met behulp van de verbindingkabel



- 5** Schakel de Stimpod in en wacht tot de groen knipperende led op de EC10-module continu oplicht



- 6** Ga verder met de standaard NMT-monitoring van de patiënt





Démarrage Rapide

French (Français)

Connectez-vous au Moniteur Patient Philips IntelliVue

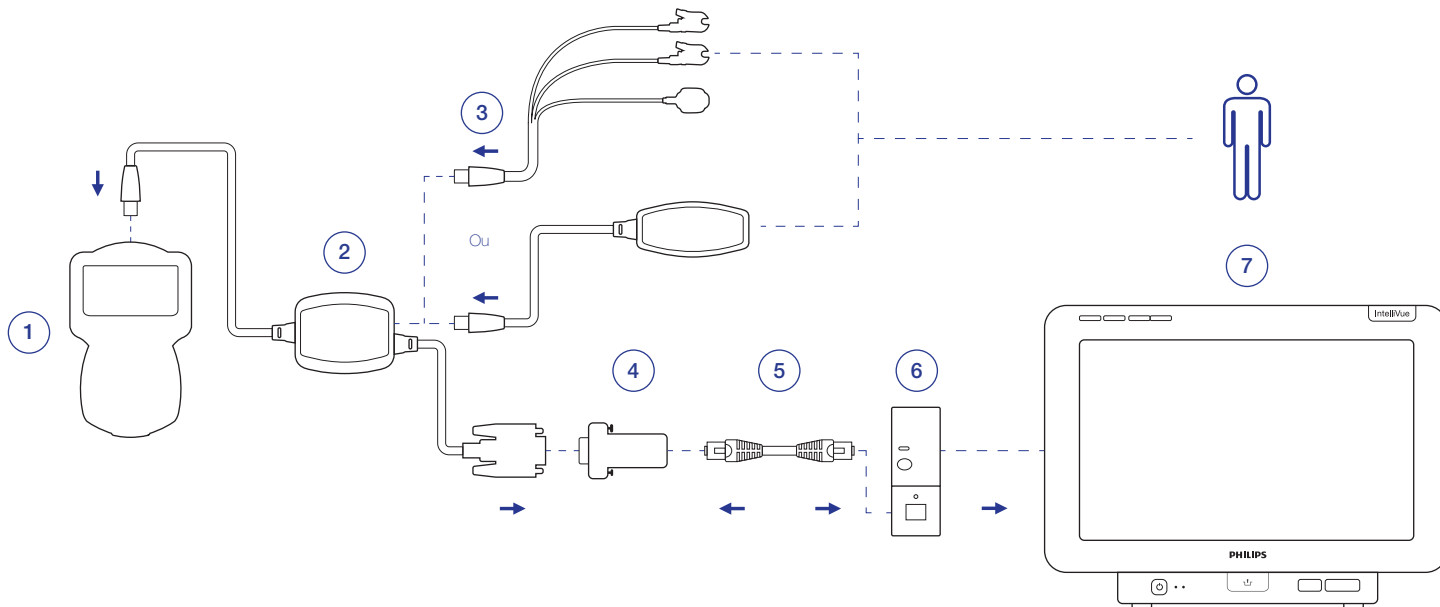


Composants Requis : Technologie Xavant

1. Logiciel Stimpod NMS 450X Ver 10.0 et Supérieure
2. Câble de Données Intelligent Philips
3. Câble de Surveillance TNM AMG (ou)
4. Câble de Surveillance TNM EMG

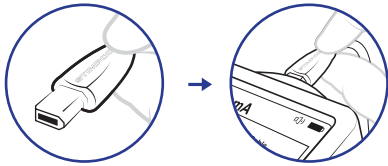
Philips

4. Module d'identification IntelliBridge EC5 PN 865114 opt 101
5. Câble de Connexion PN 865114 opt L01
6. Module IntelliBridge EC10 PN 865115opt A01,101 (ou)
Carte EC10 Integral I/F (MX400-MX550 opt J32 seulement)
7. Moniteur Patient Philips IntelliVue MP50 à MP90 ou MX400 à MX850

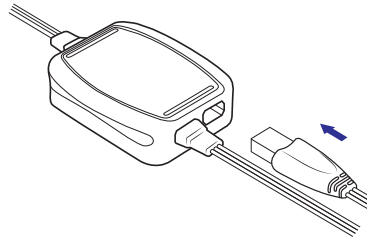


Configuration: Moniteur Patient Stimpod vers Philips IntelliVue

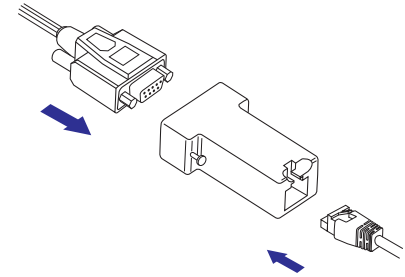
1 Connectez le câble de données intelligent: Philips à Stimpod



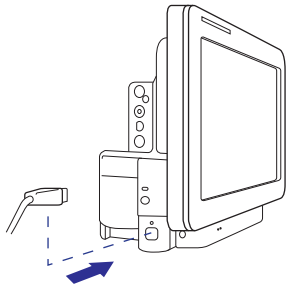
2 Connectez le câble de surveillance TNM AMG/EMG au câble de données intelligent: Philips



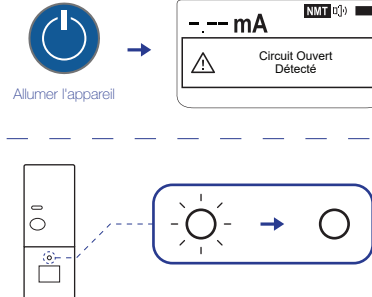
3 Connectez le câble de données intelligent: Philips à Philips IntelliBridge EC5



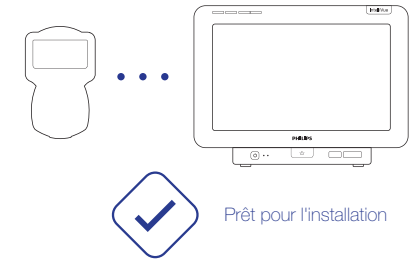
4 Connectez Philips EC5 au module EC10 en utilisant le câble de connexion



5 Allumez le Stimpod et attendez que la LED verte clignotante du module EC10 soit allumée en continu



6 Continuer avec la surveillance TNM patient standard





Schnellstart

German (Deutsche)

Anschluss an Philips IntelliVue-Patientenmonitor

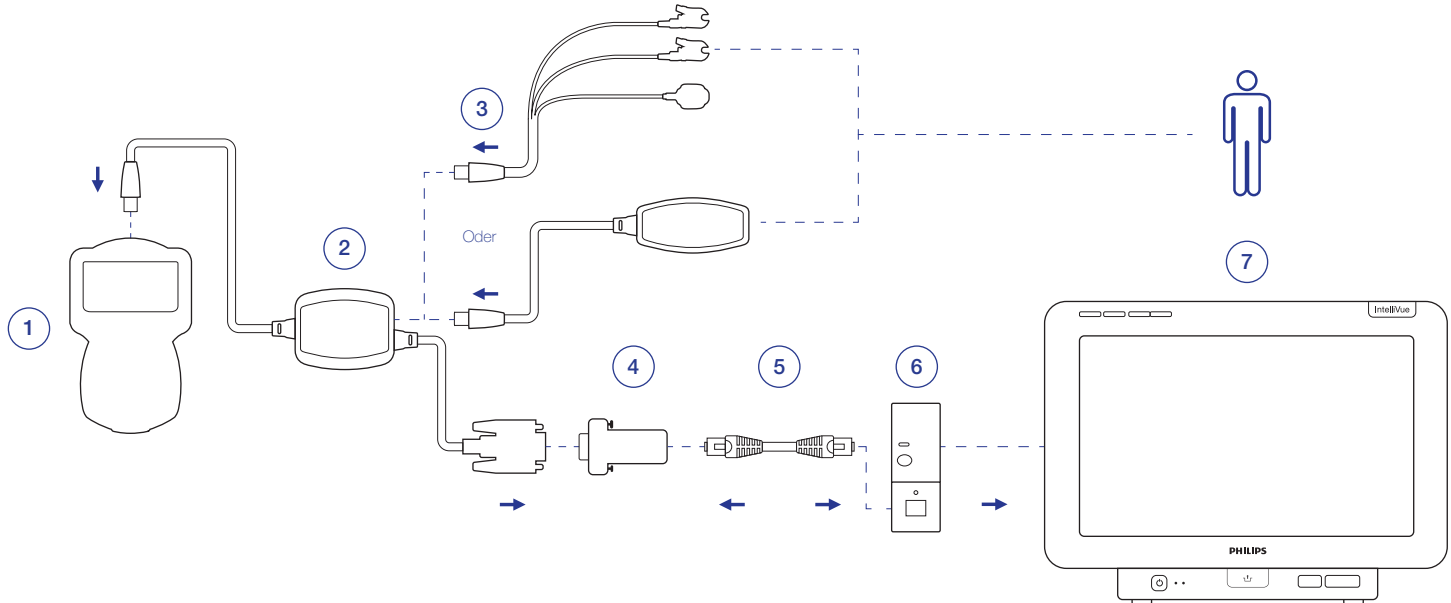


Erforderliche Komponenten: Xavant-Technologie

1. Stimpod NMS 450X-Software-Ver 10.0 und höher
2. Intelligentes Datenkabel Philips
3. NMT-Überwachungskabel AMG (Oder)
4. NMT-Überwachungskabel EMG

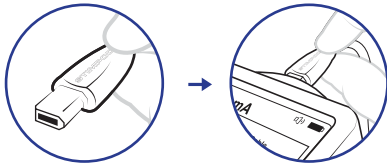
Philips

4. IntelliBridge EC5 ID-Modul PN 865114 Opt 101
5. Anschlusskabel TN 865114 Option L01
6. IntelliBridge EC10-Modul TN 865115 Option A01,101 (oder)
EC10 Integriertes I/F-Board (nur MX400-MX550 Option J32)
7. Philips IntelliVue-Patientenmonitor MP50 bis MP90 oder MX400 bis MX850

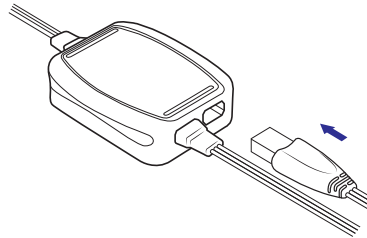


Setup: Stimpod für Phillips IntelliVue-Patientenmonitor I

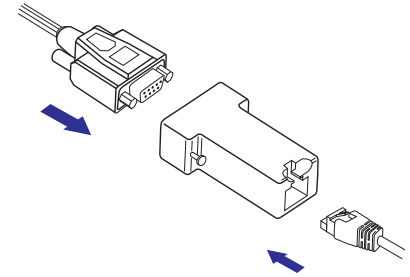
- 1** Intelligentes Datenkabel anschließen:
Von Philips zu Stimpod



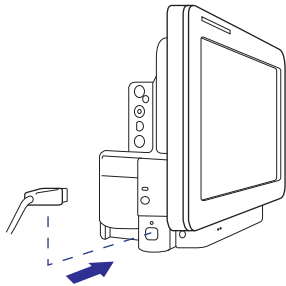
- 2** Verbinden Sie das NMT-Überwachungskabel AMG/EMG mit dem intelligenten Datenkabel: Philips



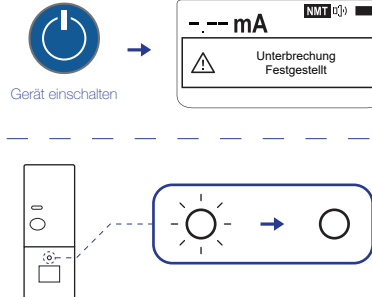
- 3** Intelligentes Datenkabel anschließen: Philips zu Philips IntelliBridge EC5



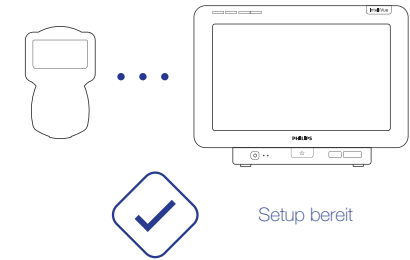
- 4** Verbinden Sie das Philips EC5 mit dem EC10-Modul über das Anschlusskabel



- 5** Schalten Sie das Stimpod ein und warten Sie, bis die grüne blinkende LED des EC10-Moduls dauerhaft leuchtet



- 6** Weiter mit Standard-Patienten-NMT-Überwachung



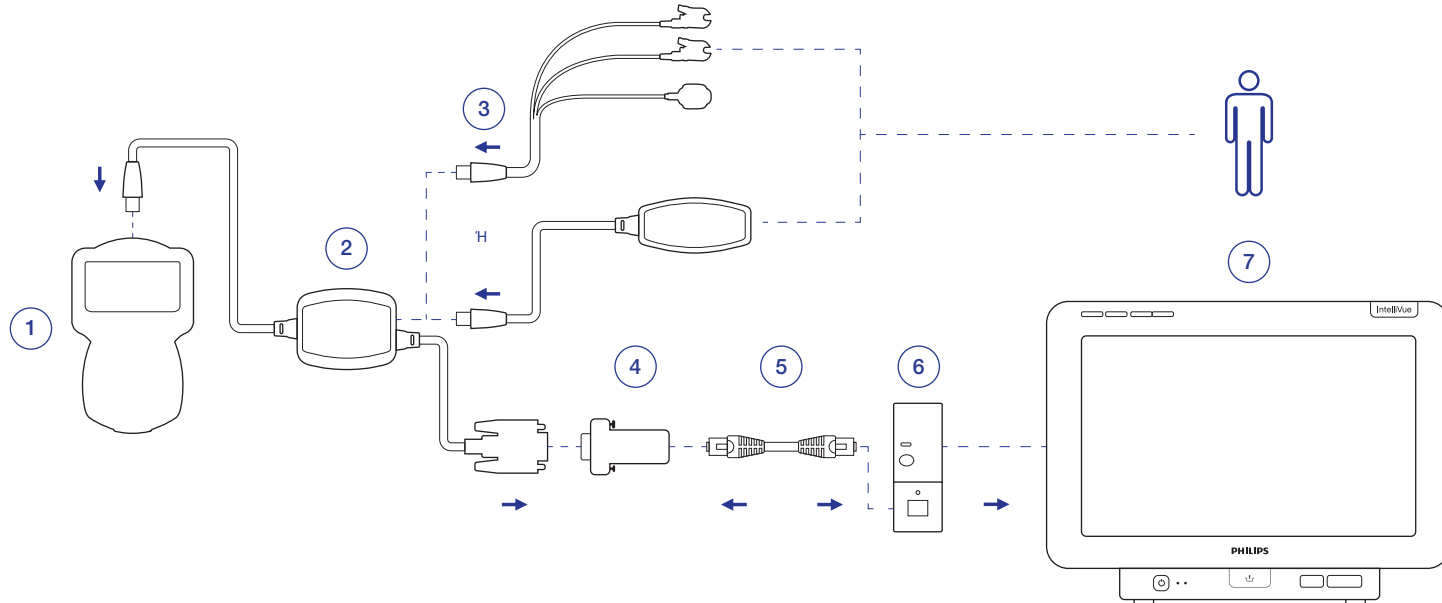


Απαιτούμενα Εξαρτήματα: Τεχνολογία Xavant

1. Λογισμικό Stimpod NMS 450X Έκδ.10.0 ή μεταγενέστερη
2. Έξυπνο Καλώδιο Δεδομένων Philips
3. Καλώδιο Παρακολούθησης NMM AMΓ (H)
4. Καλώδιο Παρακολούθησης NMM ΗΜΓ

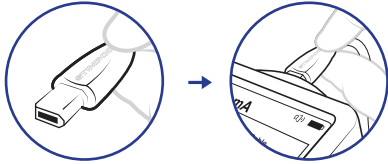
Philips

4. Εξάρτημα IntelliBridge EC5 ID PN 865114 μοντέλο 101
5. Καλώδιο Σύνδεσης PN 865114 μοντέλο L01
6. Εξάρτημα IntelliBridge EC10 PN 865115 μοντέλο A01,101 (ή) EC10 Ενιαία Πλακέτα Διεπαφής (MX400-MX550 μοντέλο J32 μόνο)
7. Μόνιτορ Ασθενή Philips IntelliVue από MP50 έως MP90 ή από MX400 έως MX850

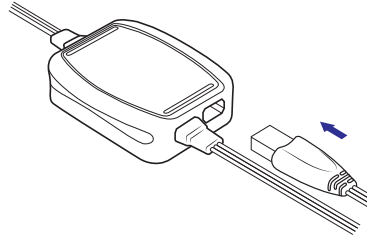


Εγκατάσταση: Σύνδεση Stimpod με το Μόνιτορ Ασθενή Philips IntelliVue

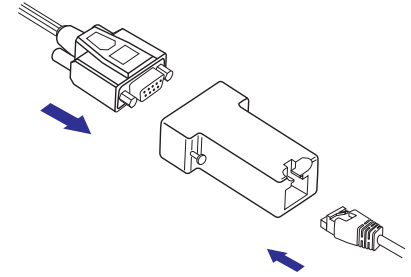
- 1** Συνδέστε το Έξυπνο Καλώδιο Μεταφοράς Δεδομένων: Philips στο Stimpod



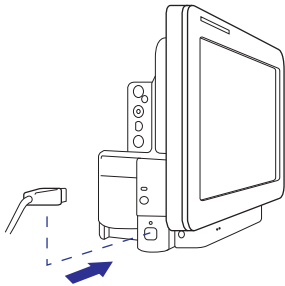
- 2** Συνδέστε το Καλώδιο Παρακολούθησης NMM AMΓ/ΗΜΓ στο Έξυπνο Καλώδιο Δεδ.: Philips



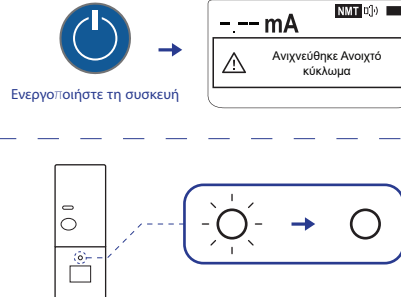
- 3** Συνδέστε το Έξυπνο Καλώδιο Δεδομένων: Philips στο Philips IntelliBridge EC5



- 4** Συνδέστε το Philips EC5 με το Εξάρτημα EC10 χρησιμοποιώντας το καλώδιο σύνδεσης



- 5** Ενεργοποιήστε το Stimpod και Περιμένετε μέχρι Το Πράσινο LED που αναβοσβήνει στο EC10 να παραμείνει σταθερά αναμμένο



- 6** Συνεχίστε με την Καθιερωμένη Παρακολούθηση NMM Ασθενή



Η Εγκατάσταση Ολοκληρώθηκε



Avvio Rapido

Italian (Italiano)

Connessione al Monitor Paziente IntelliVue Philips

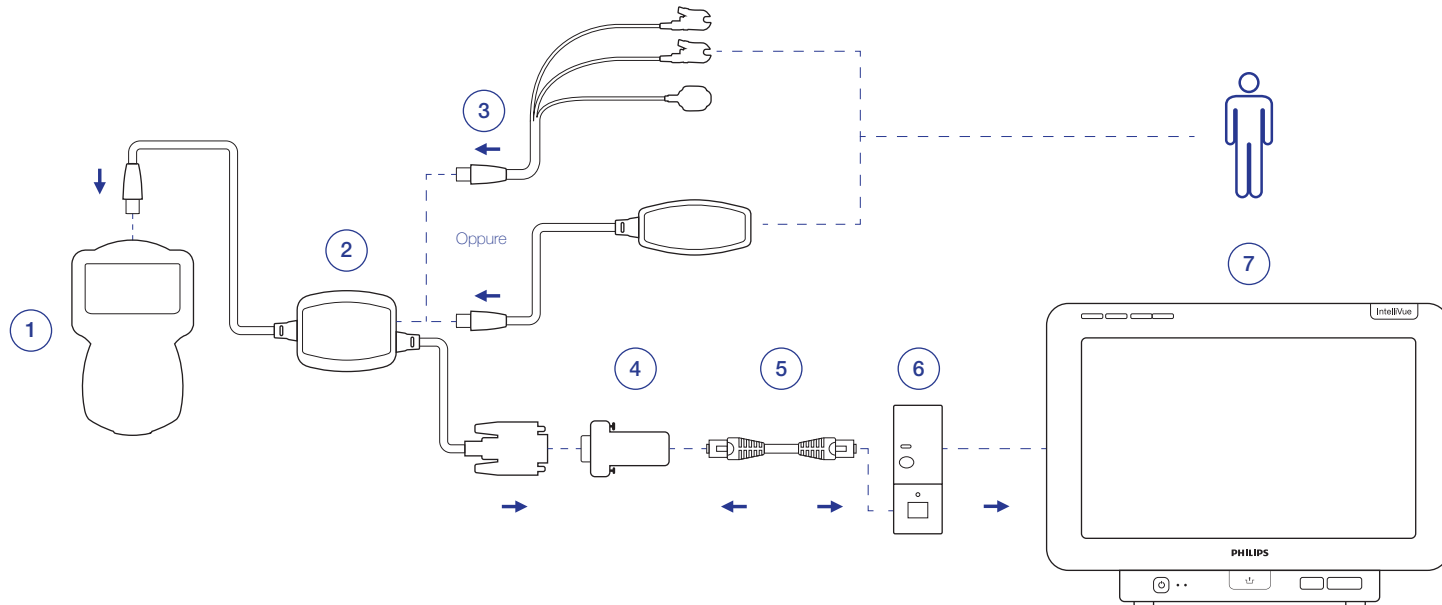


Componenti necessari: Xavant Technology

1. Stimpod NMS 450X Versione Software 10.0 e successiva
2. Cavo Dati Smart Philips
3. Cavo Monitoraggio NMT AMG (oppure)
4. Cavo Monitoraggio NMT EMG

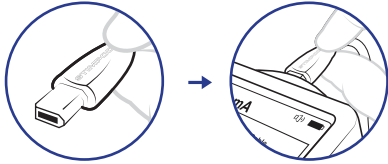
Philips

4. IntelliBridge EC5 ID Module PN 865114 opt 101
5. Cavo di collegamento PN 865114 opt L01
6. Modulo IntelliBridge EC10 PN 865115opt A01,101 (oppure) scheda I/F Integrale EC10 (solo MX400-MX550 opt J32).
7. Monitor paziente IntelliVue Philips da MP50 a MP90 oppure da MX400 a MX850

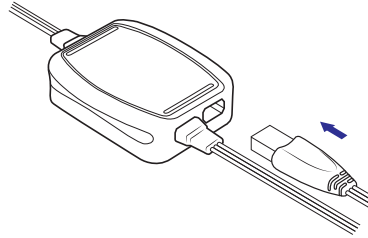


Configurazione: Da Stimpod a Philips Monitor paziente IntelliVue I

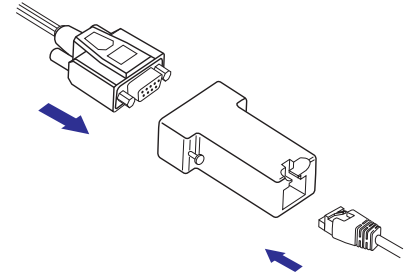
1 Connetti cavo dati smart: Da Philips a Stimpod



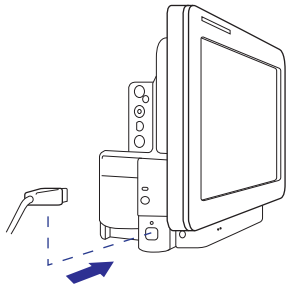
2 Connetti il cavo di monitoraggio NMT AMG/EMG al cavo dati smart: Philips



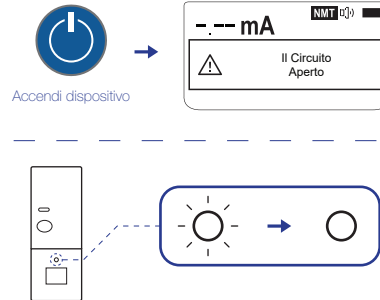
3 Connetti cavo dati smart: Da Philips a Philips IntelliBridge EC5



4 Connettere il dispositivo Philips EC5 al modulo EC10 attraverso il cavo di collegamento



5 Accendi Stimpod e attendi che il LED verde lampeggiante di EC10 Module diventi fisso



6 Continua con il monitoraggio paziente standard NMT





クイックスタート

Japanese (日本語)

フィリップスIntelliVue患者モニターに接続

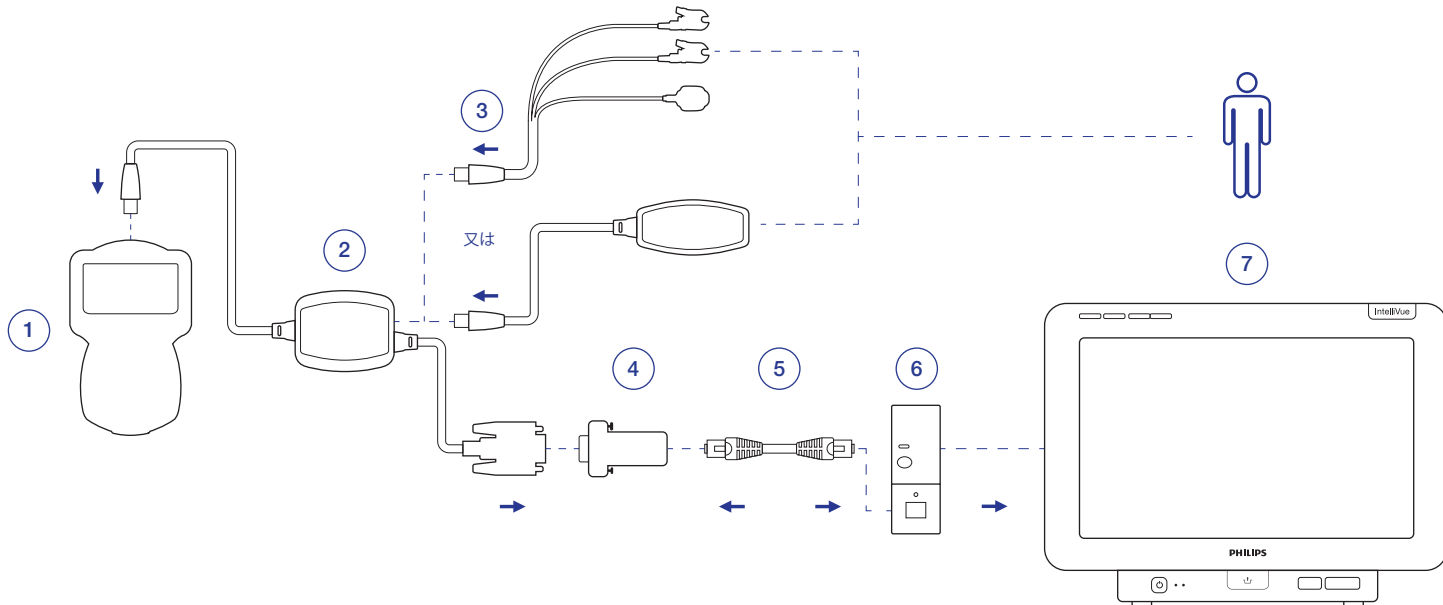


필수 구성품: Xavant Technology

1. Stimpod NMS 450Xソフトウェア Ver10.0 以降
2. 스마트데이터케이블 필립스
3. NMTモニター케이블 AMG (又は)
4. NMTモニター케이블 EMG

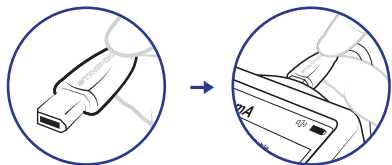
フィリップス

4. IntelliBridge EC5 ID Module PN 865114 opt 101
5. 接続ケーブル PN 865114 opt L01
6. IntelliBridge EC10モジュールPN 865115opt A01、101 (または)
EC10インテグラル/Fボード (MX400-MX550 opt J32のみ)
7. フィリップスIntelliVue患者モニターMP50 to MP90またはMX400 to MX850

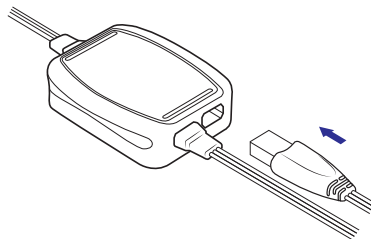


セットアップ: Stimpod からフィリップス IntelliVue 患者モニターへ

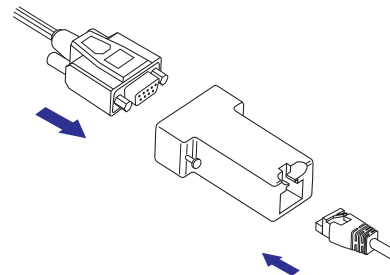
1 スマートデータケーブルをStimpodに接続



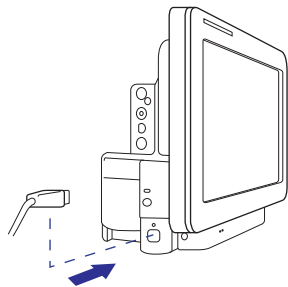
2 NMTモニタリングケーブルAMG/EMGをスマートデータケーブルに接続



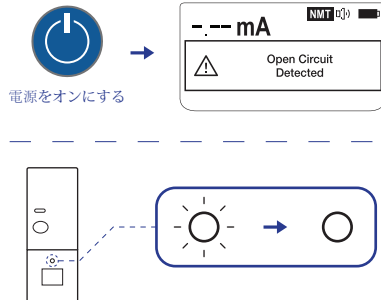
3 スマートデータケーブルをフィリップス IntelliBridge EC5 に接続



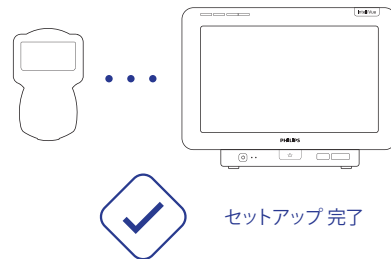
4 接続ケーブルを使って Philips EC5 を EC10 モジュールに接続



5 Stimpod の電源を入れ、EC10モジュール 緑色に点滅するLED が点灯するまで待つ



6 標準患者 NMTモニタリングを続行





빠른 설치

Korean (한국어)

필립스 인텔리뷰 환자 모니터에 연결

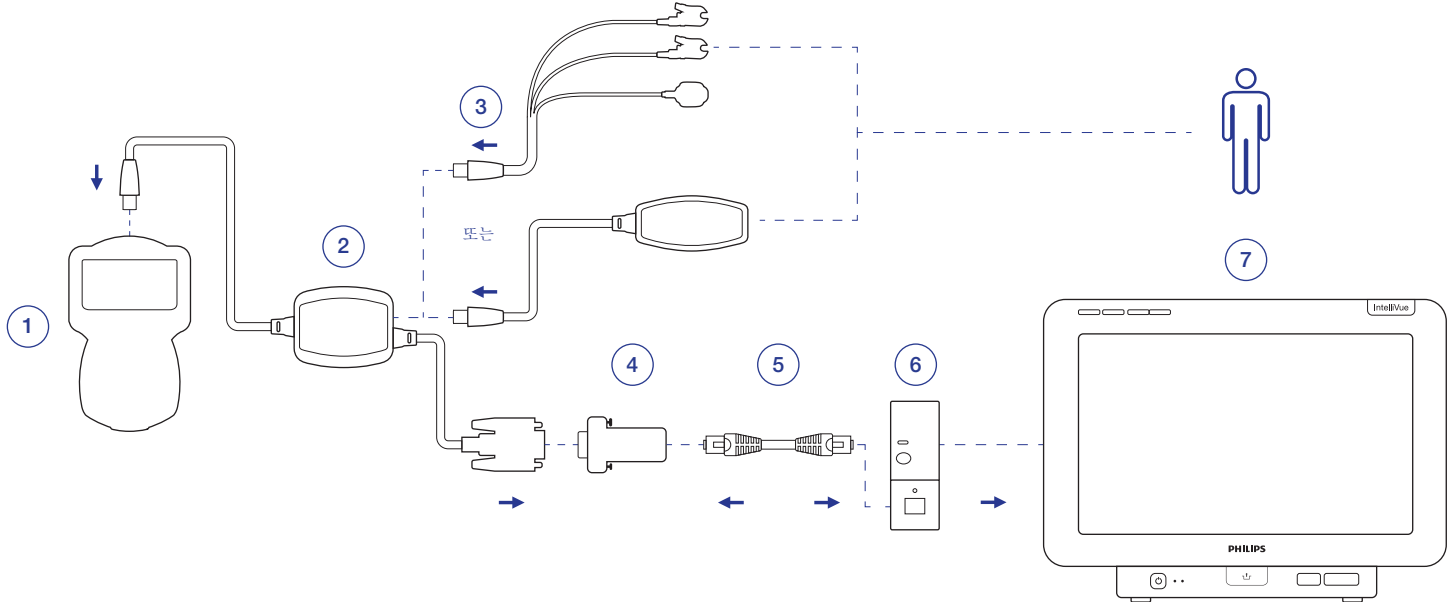


필수 구성품: Xavant Technology

1. 스텝팟 NMS 450X 소프트웨어 버전 10.0 이상
2. 스마트 데이터 케이블 필립스
3. NMT 모니터링 케이블 AMG (또는)
4. NMT 모니터링 케이블 EMG

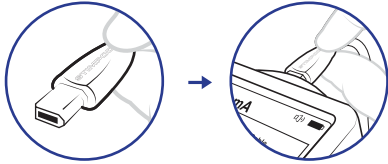
필립스

4. 인텔리브리지 EC5 ID 모듈 PN 865114 옵션 101
5. 연결 케이블 PN 865114 opt L01
6. IntelliBridge EC10 모듈 PN 865115opt A01,101 (또는)
EC10 통합 I/F 보드 (MX400-MX550 opt J32전용).
7. 필립스 인텔리뷰 환자 모니터 MP50에서 MP90 또는 MX400에서 MX850

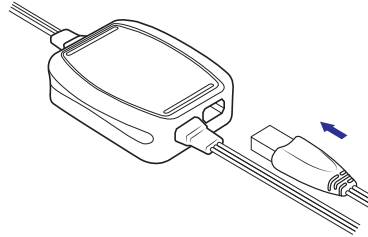


설치: 필립스 인텔리뷰 환자 모니터에 스팀팟 연결

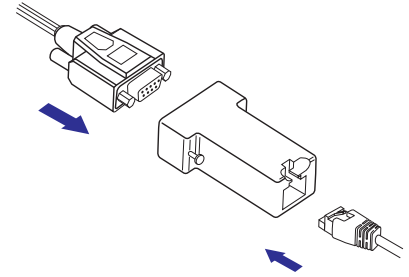
1 스마트 데이터 케이블 연결: 스팀팟에 필립스 연결



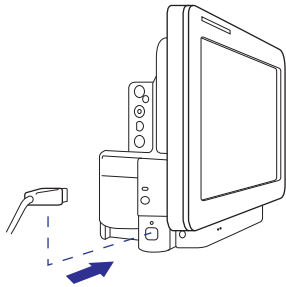
2 NMT 모니터링 케이블 AMG/EMG를 스마트 데이터 케이블에 연결: 필립스



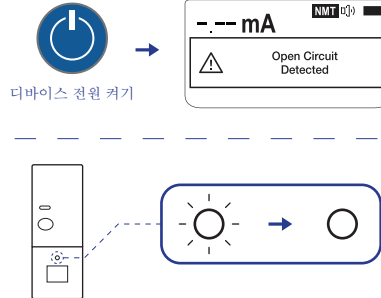
3 스마트 데이터 케이블 연결: 필립스 인텔리브리지 EC5에 필립스 연결



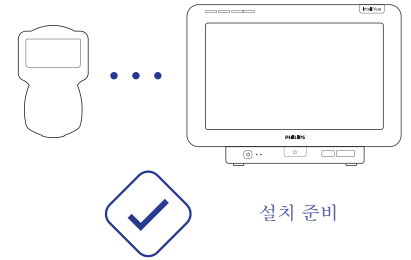
4 연결 케이블을 사용하여 Philips EC5를 EC10 모듈에 연결하세요



5 스팀팟의 전원을 켜고 EC10 모듈의 녹색 LED가 깜빡임을 멈출 때까지 대기



6 스탠드र्ड 환자 NMT 모니터링을 계속함



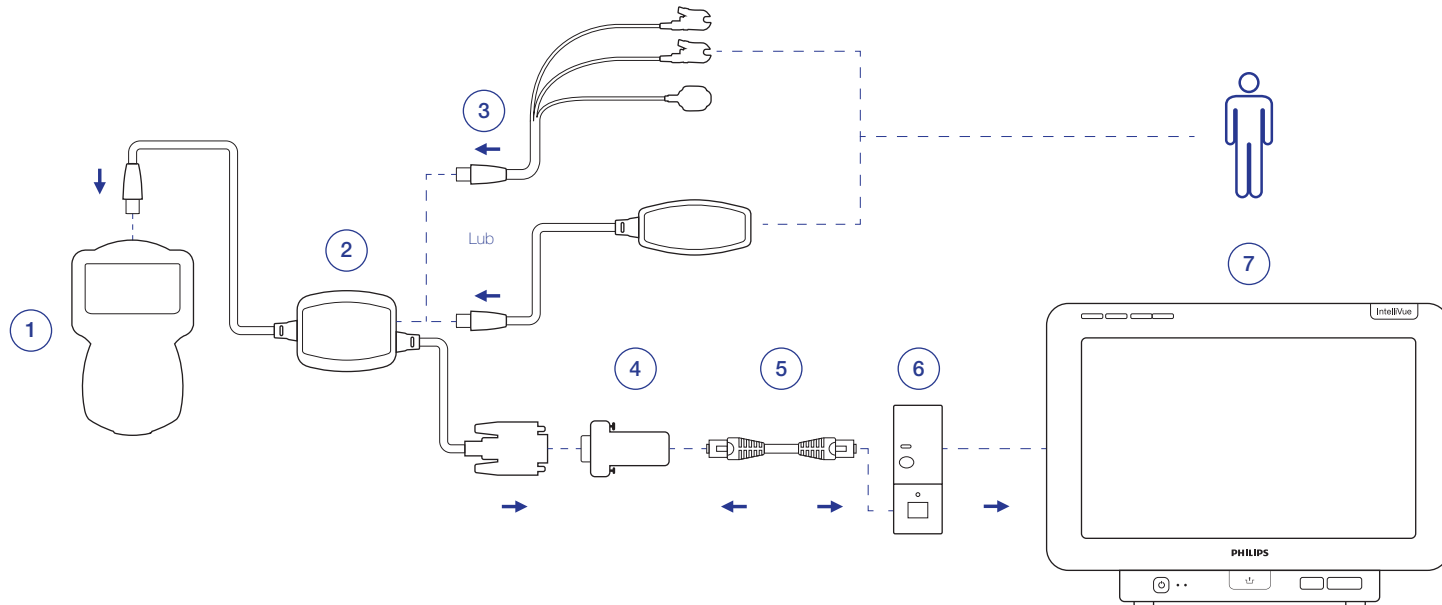


Wymagane komponenty: Technologia Xavant

1. Oprogramowanie Stimpod NMS 450X wer 10.0 i wyższa
2. Inteligentny Przewód do Transmisji Danych Philips
3. Przewód Monitoringu NMT AMG (lub)
4. Przewód Monitoringu NMT EMG

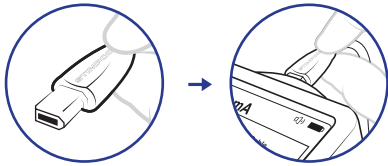
Philips

4. IntelliBridge EC5 ID, moduł PN 865114 opc. 101
5. Kabel połączeniowy PN 865114 opt L01
6. Moduł IntelliBridge EC10 PN 865115opt A01,101 (lub) płytka z układami scalonymi I/F (tylko MX400-MX550 opt J32).
7. Monitor pacjenta IntelliVue marki Philips MP50 do MP90 lub MX400 do MX850

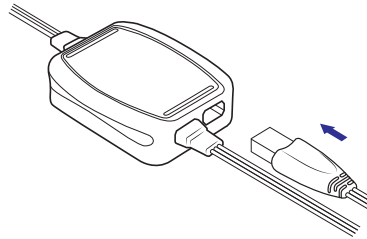


Konfiguracja: Stimpod do monitora pacjenta IntelliVue marki Philips

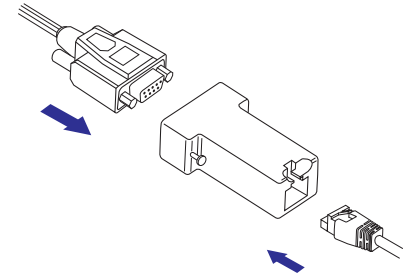
- 1** Podłącz inteligentny przewód do transmisji danych: Philips do Stimpod



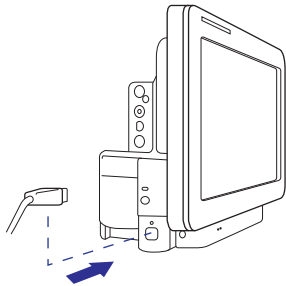
- 2** Podłącz przewód monitoringu NMT AMG/EMG do inteligentnego przewodu do transmisji danych: Philips



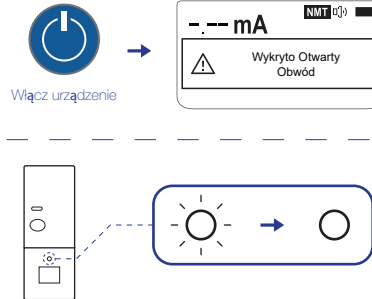
- 3** Podłącz inteligentny przewód do transmisji danych: Philips do Philips IntelliBridge EC5



- 4** Podłącz moduł Philips EC5 do modułu EC10 używając kabla połączeniowego



- 5** Włącz Stimpod i poczekaj, aż zielona dioda LED modułu EC10 zacznie się świecić na stałe



- 6** Kontynuuj ze standardowym monitoringiem pacjenta NMT



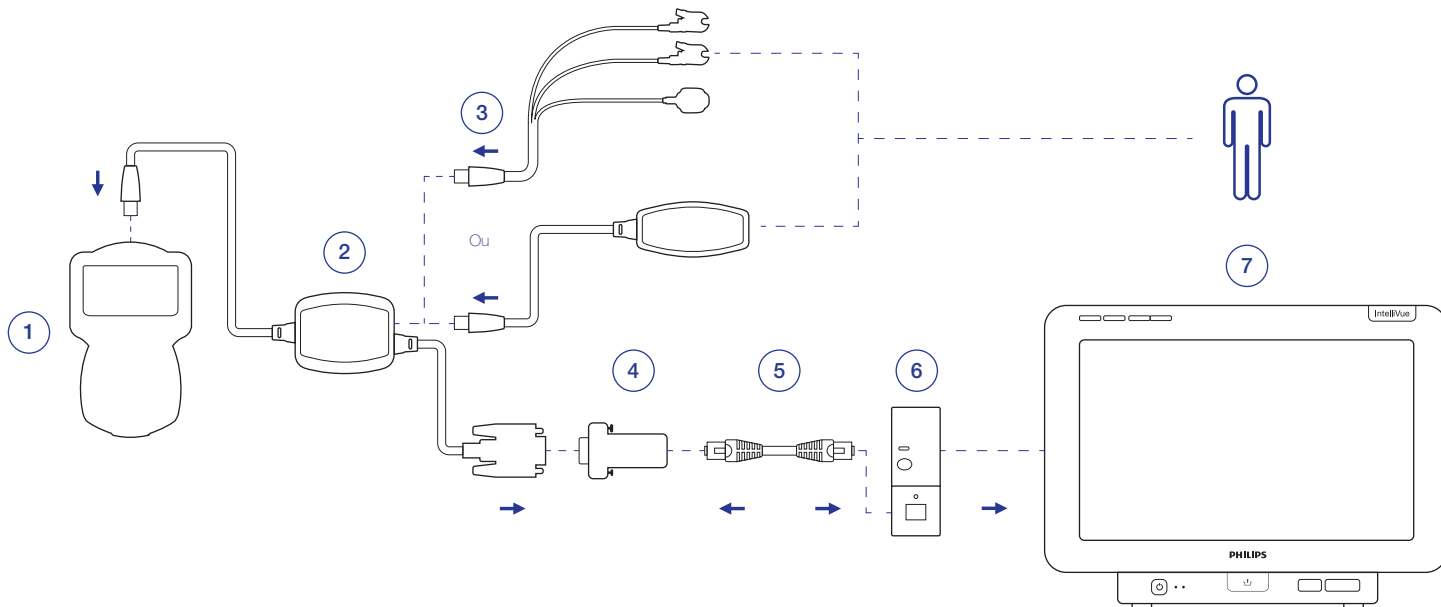


Componentes Necessários: Xavant Technology

1. Software Stimpod NMS 450X Ver 10.0 ou superior
2. Cabo de Dados Inteligente Philips
3. Cabo de Monitoramento NMT AMG (ou)
4. Cabo de Monitoramento NMT EMG

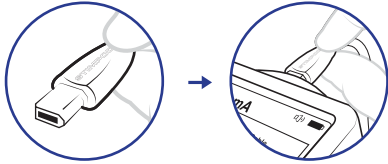
Philips

4. Módulo IntelliBridge ID EC5 PN 865114 opt 101
5. Cabo de Conexão PN 865114 opt L01
6. Módulo IntelliBridge EC10 PN 865115 opt A01,101 (ou) Placa I/F EC10 Integrada (somente MX400-MX550 opt J32).
7. Monitor de Paciente Philips IntelliVue MP50 a MP90 ou MX400 a MX850

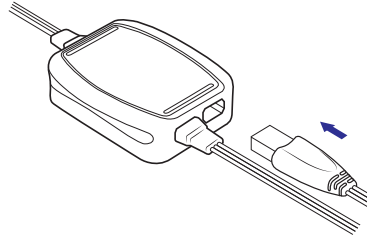


Configuração: Conecte o Stimpod ao monitor de paciente Philips IntelliVue I

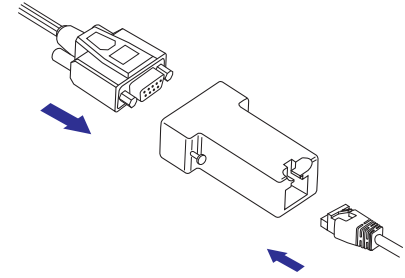
- 1** Conecte o cabo de dados inteligente: Philips ao Stimpod



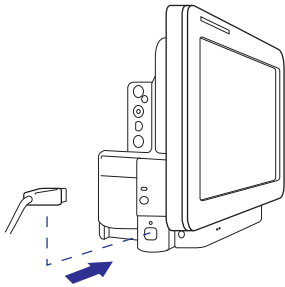
- 2** Conecte o cabo de monitoramento NMT AMG/EMG ao cabo de dados inteligente: Philips



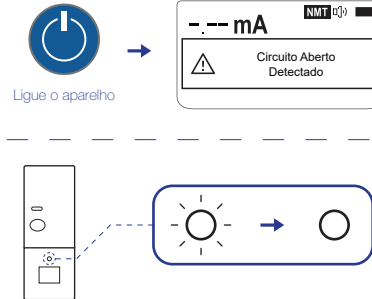
- 3** Conecte o cabo de dados inteligente: Philips ao Philips IntelliBridge EC5



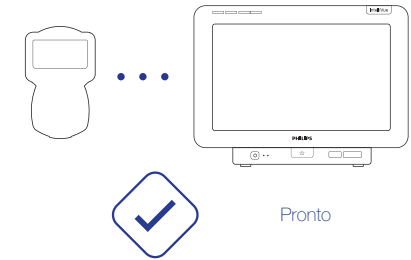
- 4** Conecte o Philips EC5 ao módulo EC10 usando o cabo de conexão



- 5** Ligue o Stimpod e aguarde até que o LED verde do módulo EC10 pare de piscar



- 6** Faça o monitoramento NMT padrão do paciente





Inicio Rápido

Spanish (Español)

I Conectarse Con el Monitor de Pacientes Philips IntelliVue

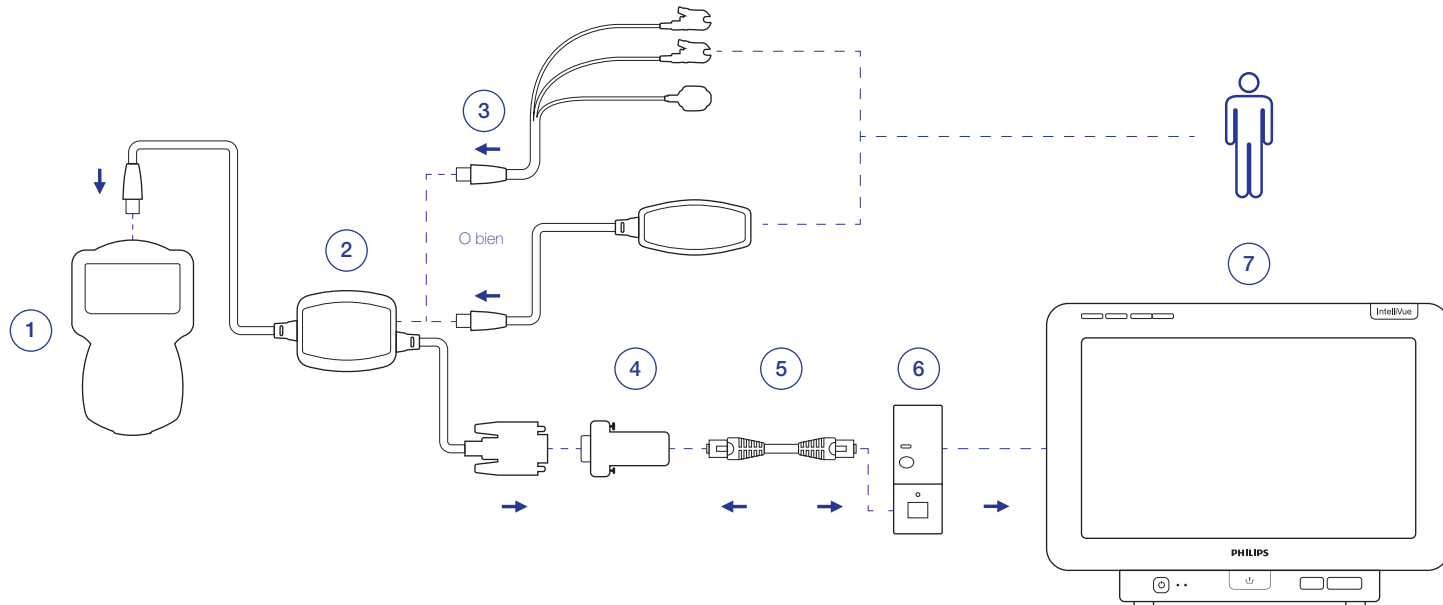


Componentes Requeridos: Xavant Technology

1. Stimpod NMS 450X, Software versión 10.0 o superior
2. Cable Smart Data Philips
3. Cable de Monitorización NMT AMG (O bien)
4. Cable de Monitorización NMT EMG

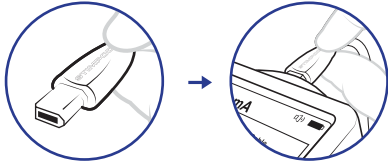
Philips

4. IntelliBridge EC5 ID Módulo PN 865114 opt 101
5. Cable de Conexión ref. 865114 #L01
6. Módulo de Interfaz IntelliBridge EC10 ref. 865115 #A01, 101 (o) interfaz de Placa Integrada EC10 (para monitores MX400-MX550 J32)
7. Monitor de Pacientes Philips IntelliVue MP50 a MP90 o MX400 a MX850

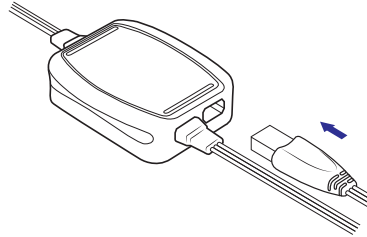


Configuración: Stimpod a Monitor de pacientes Phillips IntelliVue I

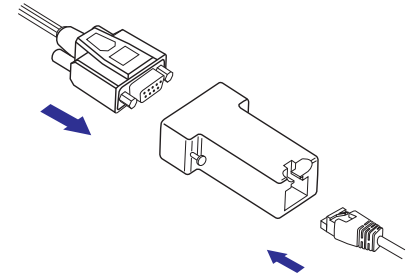
1 Conecte el cable Smart Data: Philips a Stimpod



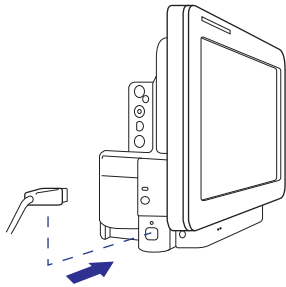
2 Conecte el cable de monitorización NMT AMG/EMG al cable Smart Data: Philips



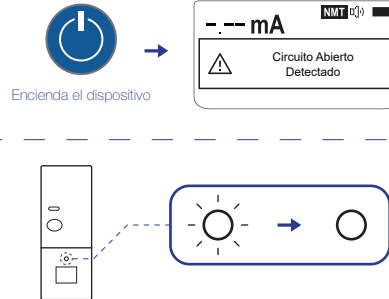
3 Conecte el cable Smart Data: Philips a Philips IntelliBridge EC5



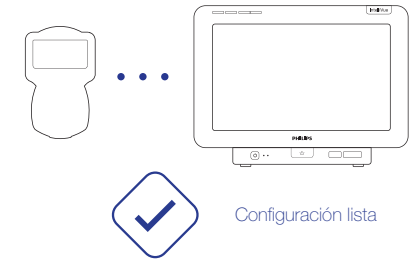
4 Conecte el módulo de interfaz EC5 de Philips al módulo EC10 mediante el cable de conexión.



5 Encienda el Stimpod y espere a que la luz LED verde parpadeante del Módulo EC10 se vuelva fija



6 Continúe con la monitorización NMT estándar del paciente





Unit 102 Tannery Industrial Park, 309 Derdepoort Road
Silverton, 0184, Pretoria, South Africa
Tel: +27 12 743 5959, Email: support@xavant.com
Web: www.xavant.com